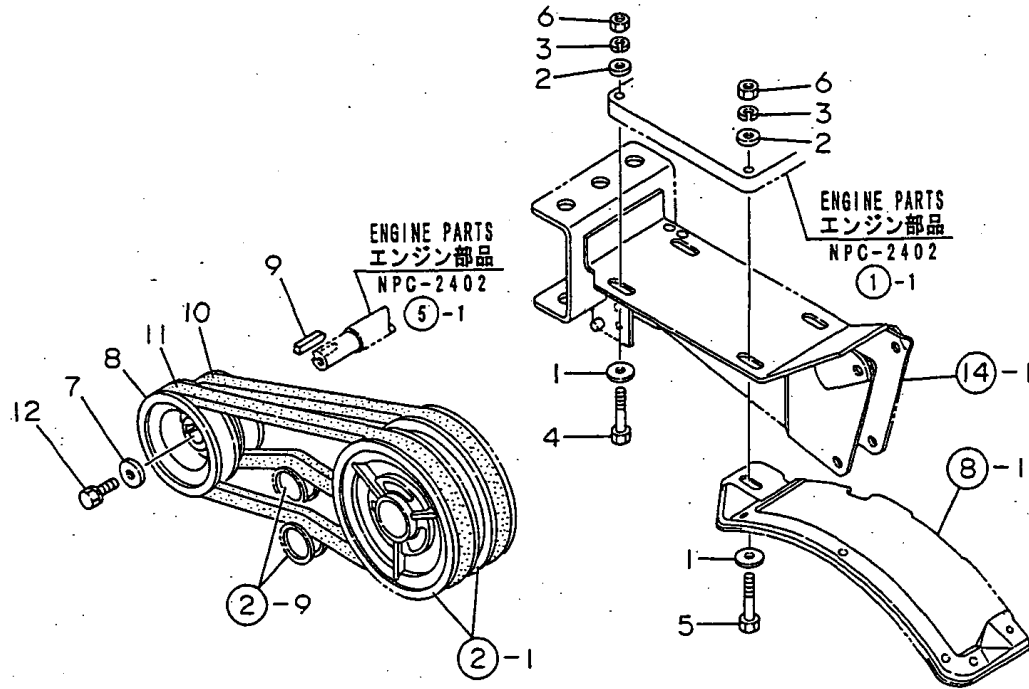


Fig.1. ENGINE MOUNTING & PULLEY

1. ENGINE MOUNTING & PULLEY



OCNP2-G57500 1. ENGINE MOUNTING & PULLEY

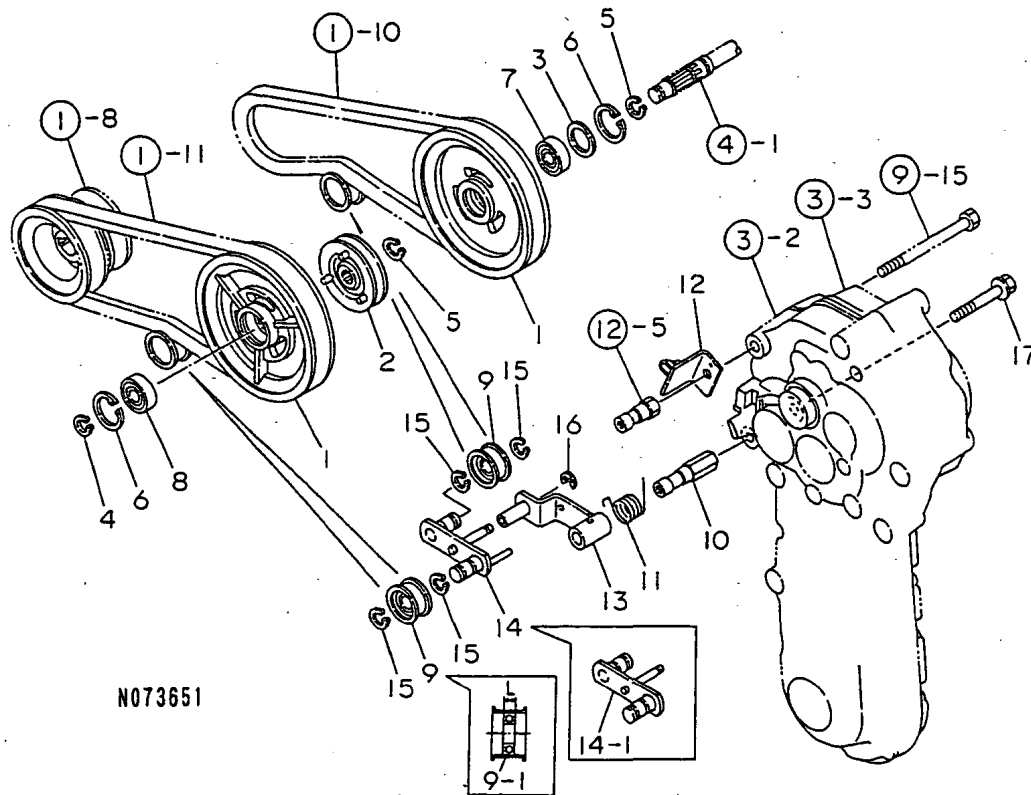
(A)=YK682C  
(B)=YK682G  
(C)=YK782C

(D)=YK782G  
(E)=YK682P,FL  
(F)=YK782P,FL

REF.	LEV.	PARTS NO.	DESCRIPTION	QTY						I	R
				(A)	(B)	(C)	(D)	(E)	(F)		
1	1	1D1140-11420	WASHER,PULLEY	4	4	4	4	4	4		
2	1	22137-080000	WASHER 8, POLISHED	4	4	4	4	4	4		
3	1	22217-080000	SPRING WASHER 8	4	4	4	4	4	4		
4	1	26117-080402	BOLT 8X40	2	2	2	2	2	2		
5	1	26117-080452	BOLT M 8X 45	2	2	2	2	2	2		
6	1	26717-080002	NUT 8	4	4	4	4	4	4		
7	1	1D1140-11420	WASHER,PULLEY	1	1	1	1	1	1		
8	1	1A2019-12000	PULLEY 582,ENGINE	1	1	1	1	1	1		
9	1	22512-050300	KEY 5X 30	1	1	1	1	1	1		
10	1	25123-003701	V-BELT	1	1	1	1				
10-1	1	1A2009-15000	V-BELT SP.H SB37	1	1	1	1	1	1	1	N
		(A=F000843) (B=F000843) (C=F000436) (D=F000436)									
11	1	25123-003801	V-BELT	1	1	1	1				
11-1	1	1A2001-15000	V-BELT SP.H 8B38	1	1	1	1	1	1	1	N
		(A=F000843) (B=F000843) (C=F000436) (D=F000436)									
12	1	26013-080164	BOLT M 8X 16	1	1	1	1	1	1		

Fig.2. MAIN PULLEY & TENSION

2. MAIN PULLEY & TENSION



OCNP2-G57500 2. MAIN PULLEY & TENSION

(A)=YK682C  
(B)=YK682G  
(C)=YK782C

(D)=YK782G  
(E)=YK682P,FL  
(F)=YK782P,FL

REF.	LEV.	PARTS NO.	DESCRIPTION	Q'TY						I	R
				(A)	(B)	(C)	(D)	(E)	(F)		
1	1	1A2009-13300	PULLEY 154,MN.SHAFT	2	2	2	2				
1-1	1	1A2009-13301	PULLEY 154,MN.SHAFT	2	2	2	2	2	2		N
		(A=F000843) (B=F000843)	(C=F000436) (D=F000436)								
2	1	1A2009-13341	SHIFTER	1	1	1	1				
2-1	1	1A2009-13342	SHIFTER	1	1	1	1	1	1		R
		(A=FXXX) (B=FXXX) (C=FXXX) (D=FXXX)									
3	1	1A1105-23210	(*) LINER ***	1	1	1	1	1	1		
4	1	22242-000150	CIRCLIP 15	1	1	1	1	1	1		
5	1	22242-000170	CIRCLIP 17	2	2	2	2	2	2		
6	1	22252-000350	CIRCLIP 35	2	2	2	2	2	2		
7	1	24104-060034	BALL BEARING	1	1	1	1	1	1		
8	1	24104-062024	BALL BEARING	1	1	1	1	1	1		
9	1	1E4060-10040	ROLLER,TENSION	2	2	2	2				1
9-1	1	1A2001-13050	ROLLER CMP,TENSION	2	2	2	2				S 1
		(A=F000237) (B=F000237) (C=F000201) (D=F000201)									
9-2	1	1A2001-13051	ROLLER CMP,TENSION	2	2	2	2	2	2		N
		(A=FXXX) (B=FXXX) (C=FXXX) (D=FXXX)									
10	1	1A2000-13100	NUT,TENSION	1	1	1	1	1	1		
11	1	1A2000-13190	SPRING,TENSION RETRN	1	1	1	1	1	1		
12	1	1A2000-13200	BRACKET COMPL.,WIRE	1	1	1	1	1	1		
13	1	1A2009-13510	ARM COMP.,TENSION	1	1	1	1	1	1		
14	1	1A2009-13540	ARM CMP,TENSION AUX.	1	1	1	1				
14-1	1	1A2001-13100	ARM CMP,TENSION AUX.	1	1	1	1	1	1		S
		(A=F000237) (B=F000237) (C=F000201) (D=F000201)									
15	1	22242-000150	CIRCLIP 15	4	4	4	4	4	4		
16	1	22272-000060	CIRCLIP E- 6	1	1	1	1	1	1		
17	1	26137-100702	BOLT M10X 70 PLATED	1	1	1	1	1	1		

N073651

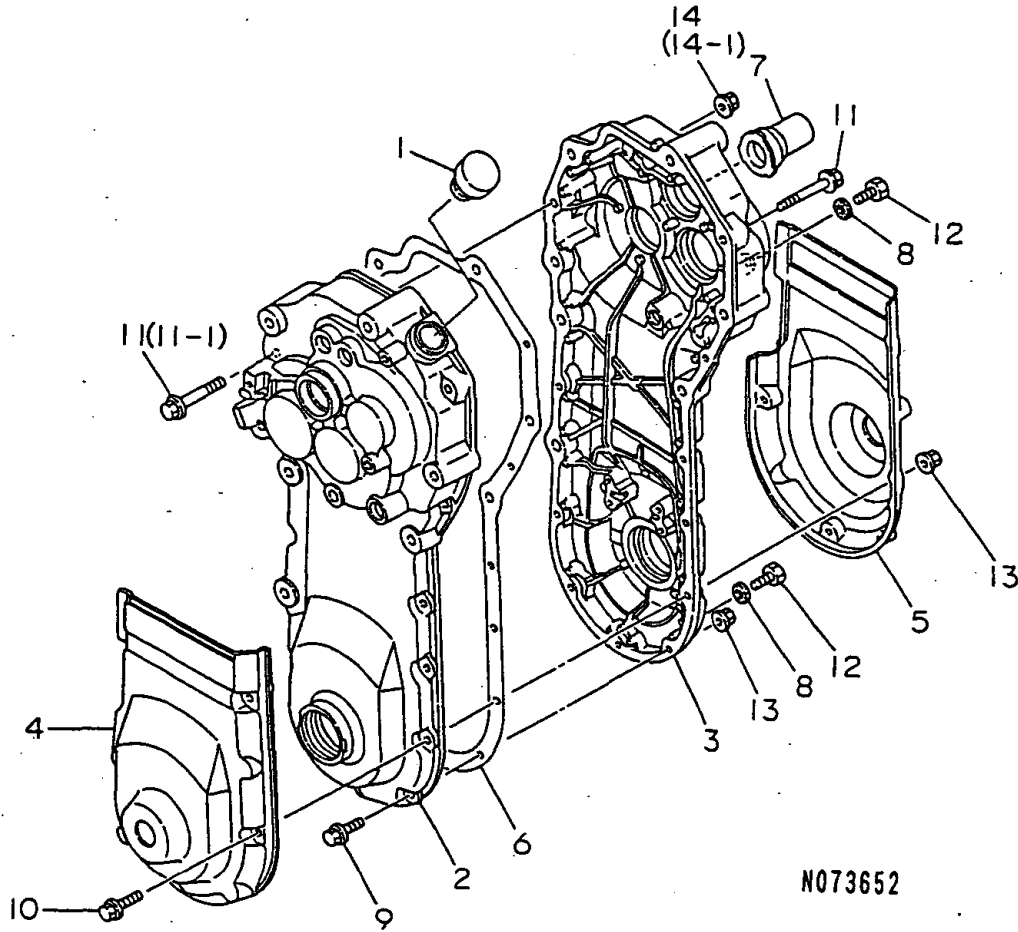
Remarks

(1)L= REFER.NO.9 11M/M,9-1 9M/M.

N:Old  $\xrightarrow{\text{Yes}}$  New, Q:Old  $\xrightarrow{\text{No}}$  New, R:Old  $\xrightarrow{\text{Yes}}$  New, S:Old  $\xrightarrow{\text{No}}$  New, W:Add, Z:Discontinued, F:Interchangeable by set, K:Q'ty Change

Fig.3. TRANSMISSION CASE

3. TRANSMISSION CASE



N073652

0CNP2-G57500 3. TRANSMISSION CASE

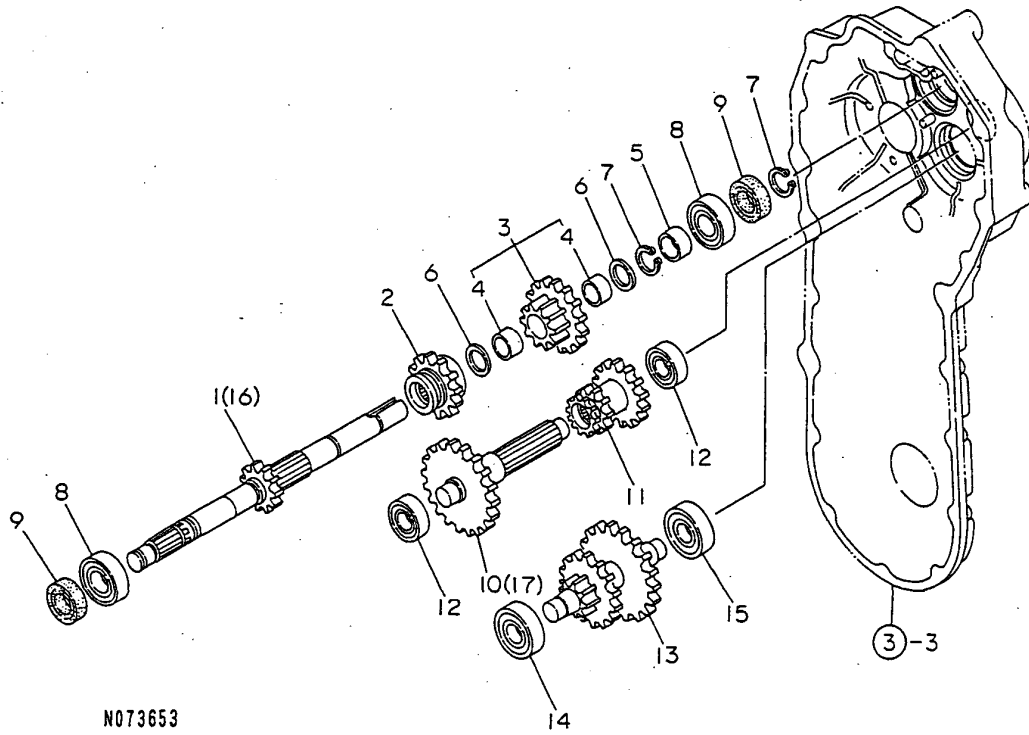
(A)=YK682C  
(B)=YK682G  
(C)=YK782C

(D)=YK782G  
(E)=YK682P,FL  
(F)=YK782P,FL

REF.	LEV.	PARTS NO.	DESCRIPTION	QTY						I	R
				(A)	(B)	(C)	(D)	(E)	(F)		
1	1	1A1470-20090	CAP 35,OIL FILLER	1	1	1	1	1	1		
2	1	1A2000-21100	CASE L,TRANSMISSION	1	1	1	1	1	1		
3	1	1A2000-21110	CASE R,TRANSMISSION	1	1	1	1	1	1		
4	1	1A2000-21150	COVER L,PROTECTIVE	1	1	1	1	1	1		
5	1	1A2000-21160	COVER R,PROTECTIVE	1	1	1	1	1	1		
6	1	1A2000-21200	PACKING,TRANSM.CASE	1	1	1	1	1	1		
7	1	1A1220-28290	CAP,P.T.O.	1	1	1	1	1	1		
8	1	23414-080000	GASKET 8, ROUND	2	2	2	2	2	2		
9	1	26106-060252	BOLT M 6X 25 PLATED	5	5	5	5	5	5		
10	1	26106-060302	BOLT M 6X 30 PLATED	4	4	4	4	4	4		
11	1	26107-080502	BOLT M 8X 50 PLATED	2	2	2	2	2	2		
11-1	1	26107-080502	BOLT M 8X 50 PLATED		1		1				K
(B=F000843) (D=F000436)											
12	1	26117-080122	BOLT M 8X 12 PLATED	2	2	2	2				
12-1	1	1A2001-21250	BOLT M8X12,COLLAR HD	2	2	2	2	2	2		S
(A=F000973) (B=F000973) (C=F000456) (D=F000456)											
13	1	26367-060002	NUT M 6	9	9	9	9	9	9		
14	1	26367-080002	U-NUT M 8	2	2	2	2				
14-1	1	26367-080002	U-NUT M 8		1		1		1		K
(A=F000843) (B=F000843) (C=F000436) (D=F000436)											

Fig.4. MAIN,COUNTER & REDUCT'N SHAFTS

4. MAIN,COUNTER & REDUCT'N SHAFTS



OCNP2-G57500 4. MAIN,COUNTER & REDUCT'N SHAFTS

(A)=YK682C

(B)=YK682G

(C)=YK782C

(D)=YK782G

(E)=YK682P,FL

(F)=YK782P,FL

REF.	LEV.	PARTS NO.	DESCRIPTION	QTY						I	R
				(A)	(B)	(C)	(D)	(E)	(F)		
1	1	1A2009-23000	SHAFT COMPL.,MAIN	1	1	1	1	1	1		
2	1	1A2000-23012	GEAR 23 SLIDE	1	1	1	1	1	1		
3	1	1A2009-23030	GEAR 15X27 COMPL.	1	1	1	1	1	1		
4	2	1A2000-23020	BUSH 17X10,DRY	2	2	2	2	2	2		
5	1	1A2000-23070	COLLAR 18X22X11	1	1	1	1	1	1		
6	1	1E4060-74090	LINER 17X24X1	2	2	2	2	2	2		
7	1	22242-000170	CIRCLIP 17	2	2	2	2	2	2		
8	1	24101-062034	BALL BEARING	2	2	2	2	2	2		
9	1	24421-173208	SEAL TC17.32 08, OIL	2	2	2	2	2	2		
10	1	1A2009-23100	SHAFT COMP.,COUNTER	1	1	1	1	1	1		
11	1	1A2009-23140	GEAR 15X23,SLIDE	1	1	1	1	1	1		
12	1	24101-062024	BALL BEARING	2	2	2	2	2	2		
13	1	1A2000-23200	SHAFT COMP.,REDUCT'N	1	1	1	1	1	1		
14	1	1A2000-23251	BEARING 6302-9T3C	1	1	1	1	1	1		
15	1	24101-063024	BALL BEARING	1	1	1	1	1	1		
16	1	1A2019-23060	AXLE SHAFT (582							1	1
17	1	1A2000-23100	SHAFT COMPL.,COUNTER							1	1

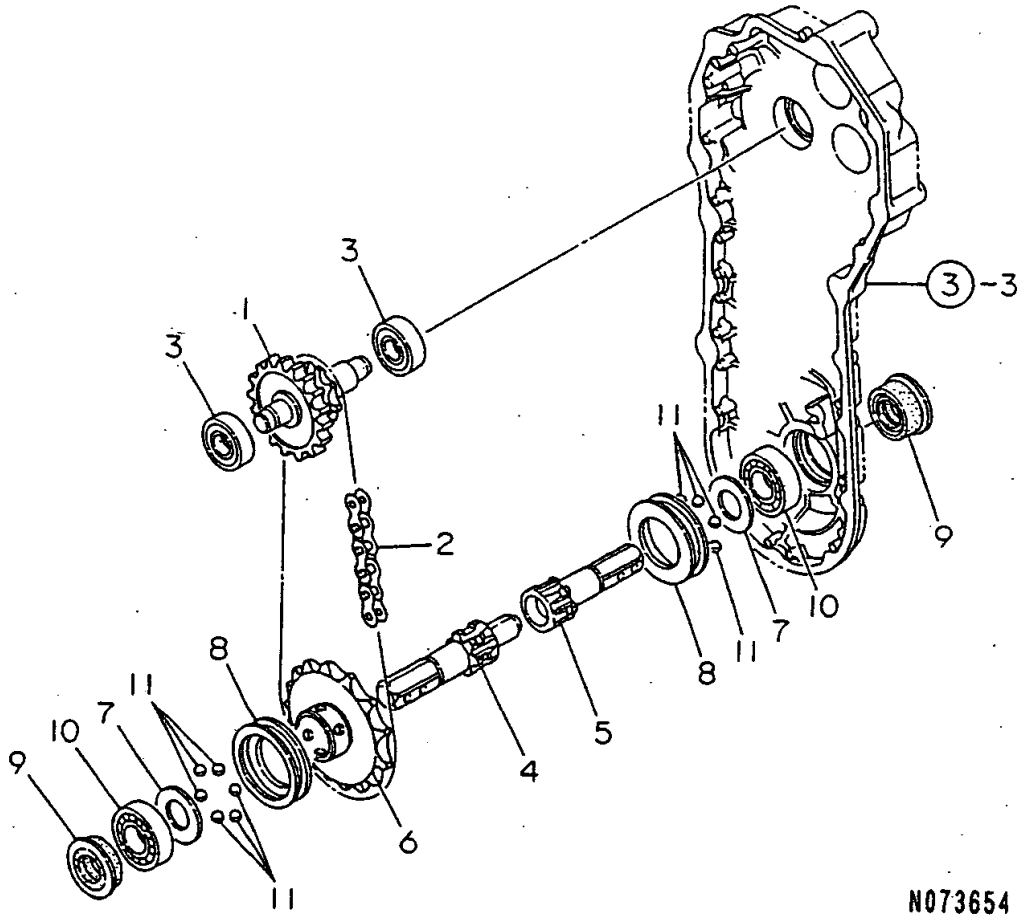
Remarks

(1)EXCLUSIVE FOR YK682FL,782FL.

N:Old  $\xrightarrow{\text{Yes}}$  New, Q:Old  $\xrightarrow{\text{No}}$  New, R:Old  $\xrightarrow{\text{Yes}}$  New, S:Old  $\xrightarrow{\text{No}}$  New, W:Add, Z:Discontinued, F:Interchangeable by set, K:Q'ty Change

Fig.5. FINAL SHAFT & AXLE

# 5. FINAL SHAFT & AXLE



N073654

## 5. FINAL SHAFT & AXLE

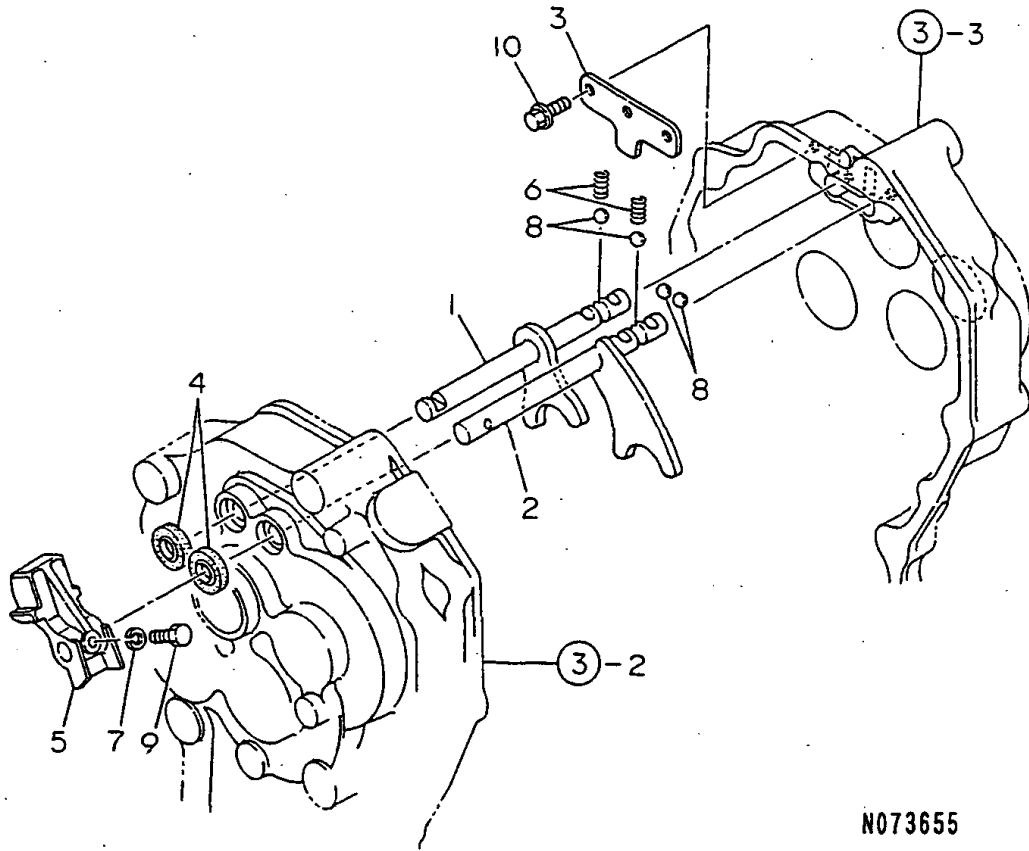
(A)=YK682C  
(B)=YK682G  
(C)=YK782C

(D)=YK782G  
(E)=YK682P,FL  
(F)=YK782P,FL

REF.	LEV.	PARTS NO.	DESCRIPTION	QTY						I	R
				(A)	(B)	(C)	(D)	(E)	(F)		
1	1	1A2000-23301	SHAFT COMPL.,FINAL	1	1	1	1	1	1		
2	1	1A1479-23480	CHAIN 50X52,ROLLER	1	1	1	1	1	1		
3	1	24101-063034	BALL BEARING	2	2	2	2	2	2		
4	1	1A2009-24501	AXLE A	1	1	1	1	1	1		
5	1	1A2009-24511	AXLE B	1	1	1	1	1	1		
6	1	1A2000-24520	SPROCKET,AXLE	1	1	1	1	1	1		
7	1	1A2000-24530	LINER 27X45X2	2	2	2	2	2	2		
8	1	1A2000-24550	SHIFTER	2	2	2	2	2	2		
9	1	1A2000-24600	SEAL 254411,OIL	2	2	2	2	2	2		
10	1	24101-062054	BEARING #6205	2	2	2	2	2	2		
11	1	24190-120001	BALL 3/8,STEEL	12	12	12	12	12	12		

Fig.6. MAIN CHANGE

6. MAIN CHANGE



N073655

OCNP2-G57500 6. MAIN CHANGE

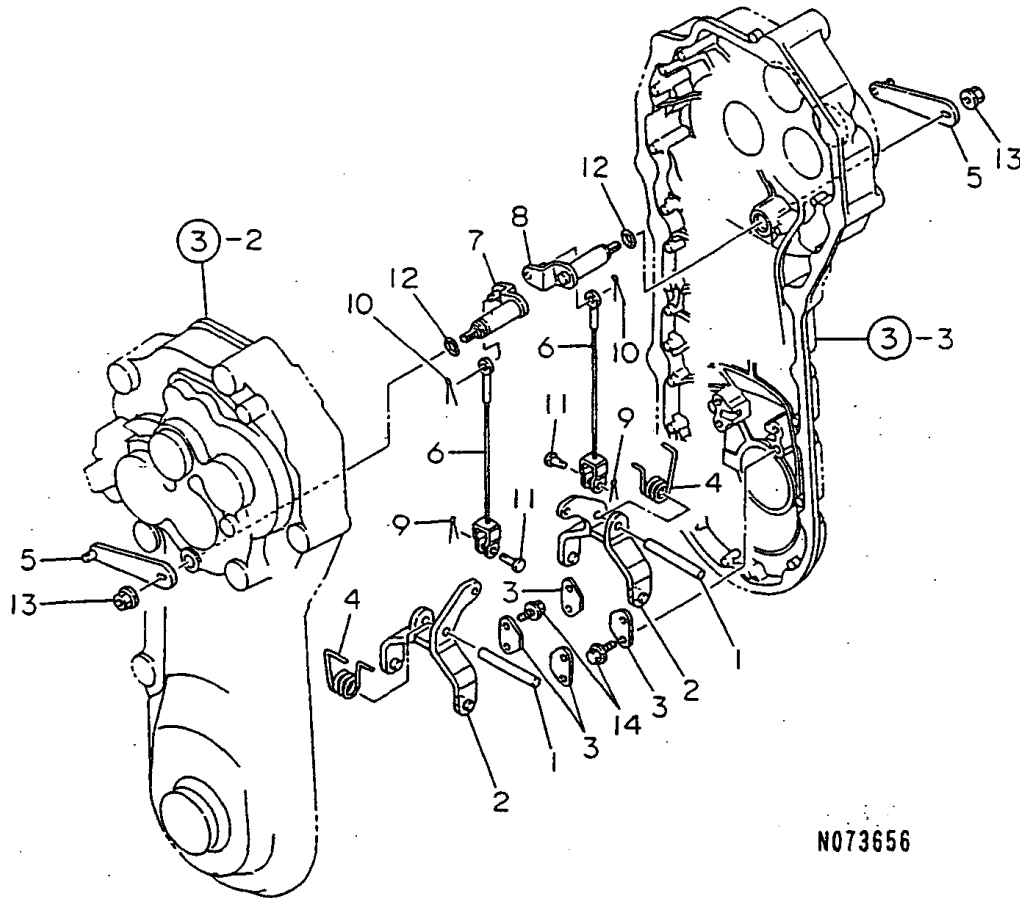
(A)=YK682C  
(B)=YK682G  
(C)=YK782C

(D)=YK782G  
(E)=YK682P,FL  
(F)=YK782P,FL

REF.	LEV.	PARTS NO.	DESCRIPTION	QTY						I	R
				(A)	(B)	(C)	(D)	(E)	(F)		
1	1	1A2000-27010	SHAFT A COMP.,FORK	1	1	1	1	1	1		
2	1	1A2000-27051	SHAFT B COMP.,FORK	1	1	1	1	1	1		
3	1	1A2000-27100	PLATE,BALL KEEP	1	1	1	1	1	1		
4	1	1A1104-28230	OIL SEAL 12184	2	2	2	2	2	2		
5	1	1A2000-55241	BRACKET,CHANGE LEVER	1	1	1	1	1	1		
6	1	1E6150-56040	SPRING	2	2	2	2	2	2		
7	1	22217-060000	SPRING WASHER 6	1	1	1	1	1	1		
8	1	24190-100001	BALL 5/16, STEEL	4	4	4	4	4	4		
9	1	26116-060162	BOLT 6X16	1	1	1	1	1	1		
10	1	26476-060142	BOLT M 6X 14,TAPPING	3	3	3	3	3	3		

Fig.7. SIDE CLUTCH

7. SIDE CLUTCH



N073656

OCNP2-G57500 7. SIDE CLUTCH

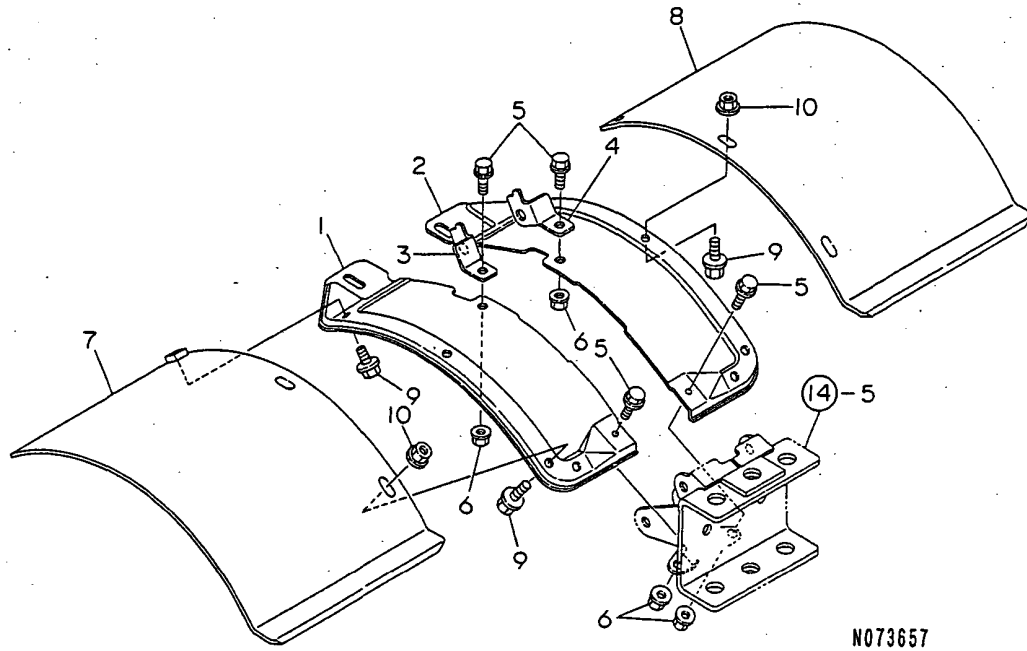
(A)=YK682C  
(B)=YK682G  
(C)=YK782C

(D)=YK782G  
(E)=YK682P,FL  
(F)=YK782P,FL

REF.	LEV.	PARTS NO.	DESCRIPTION	QTY						I	R
				(A)	(B)	(C)	(D)	(E)	(F)		
1	1	1A1470-20700	PIN 8X55	2	2	2	2	2	2		
2	1	1A2000-27530	FORK COMP.,SD.CLUTCH	2	2	2	2	2	2		
3	1	1A2000-27600	PLATE,SD.CLUTCH KEEP	4	4	4	4	4	4		
4	1	1A2000-27650	SPRING,SD.CLUTCH TORS	2	2	2	2	2	2		
5	1	1A2000-27700	ARM COMP.,SD.CLUTCH	2	2	2	2	2	2		
6	1	1A2000-27750	CABLE 163	2	2	2	2	2	2		
7	1	1A2000-27800	SHAFT L CMP,SD.CLUTCH	1	1	1	1	1	1		
8	1	1A2000-27840	SHAFT R CMP,SD.CLUTCH	1	1	1	1	1	1		
9	1	22417-160120	COTTER PIN 1.6X12	2	2	2	2	2	2		
10	1	22417-200120	COTTER PIN 2.0X12	2	2	2	2	2	2		
11	1	22487-060120	PIN,FLAT HEAD 6X 12	2	2	2	2	2	2		
12	1	24311-000100	O-RING 1A P-10.0	2	2	2	2	2	2		
13	1	26367-080002	U-NUT M 8	2	2	2	2	2	2		
14	1	26476-060142	BOLT M 6X 14,TAPPING	8	8	8	8	8	8		

Fig.8. FENDER

8. FENDER



N073657

OCNP2-G57500 8. FENDER

(A)=YK682C  
(B)=YK682G  
(C)=YK782C

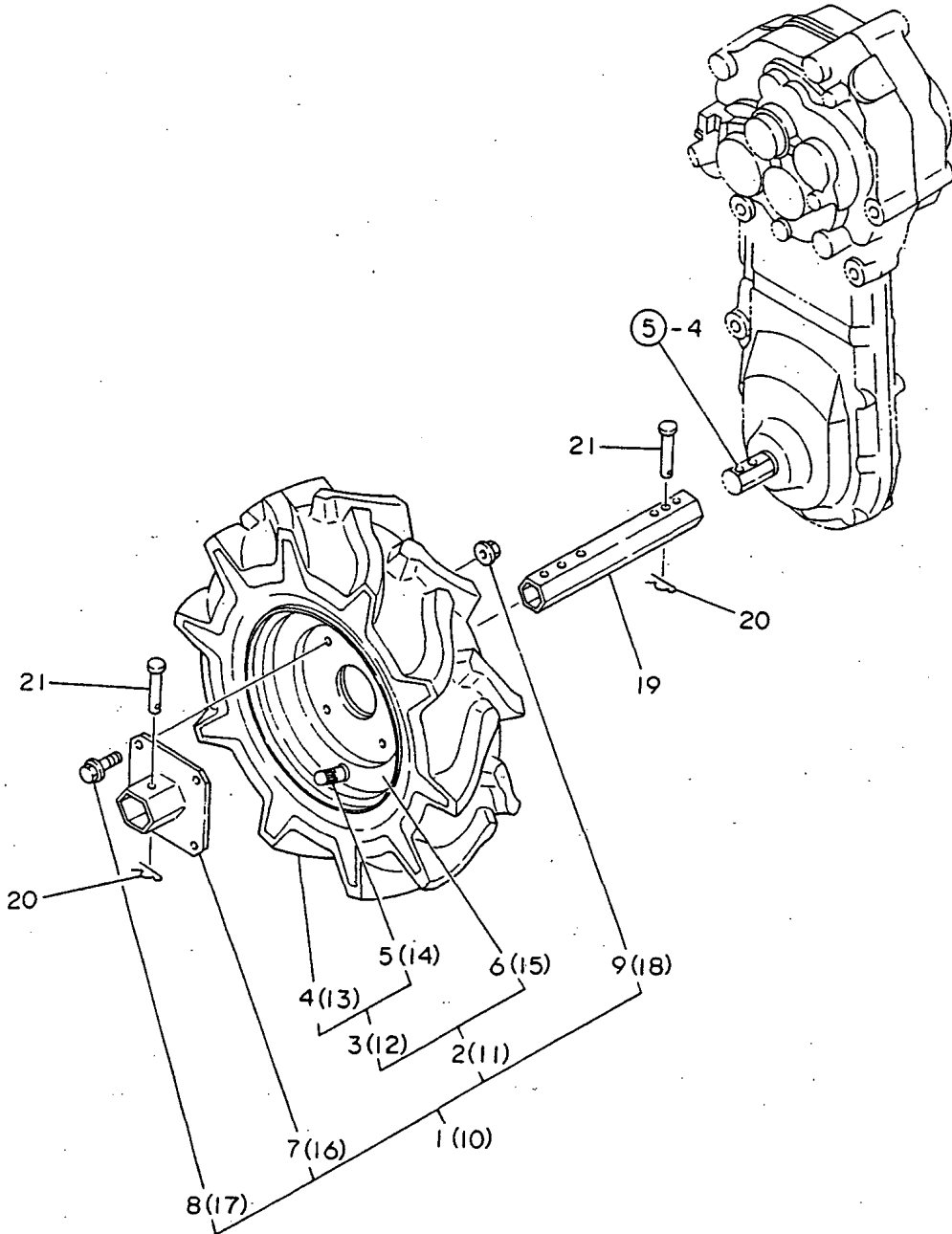
(D)=YK782G  
(E)=YK682P,FL  
(F)=YK782P,FL

REF.	LEV.	PARTS NO.	DESCRIPTION	Q'TY						I	R
				(A)	(B)	(C)	(D)	(E)	(F)		
1	1	1A2019-32000	FENDER L 1.0	1	1	1	1	1	1		
2	1	1A2019-32010	FENDER R 1.0	1	1	1	1	1	1		
3	1	1A2019-32100	STAY L,FENDER MTG.	1	1	1	1	1	1		
4	1	1A2019-32110	STAY R,FENDER MTG.	1	1	1	1	1	1		
5	1	26107-080122	BOLT M 8X 12 PLATED	4	4	4	4	4	4		
6	1	26367-080002	U-NUT M 8	4	4	4	4	4	4		
7	1	1A2138-32090	FENDER,EXTENSION	1	1	1	1	1	1	1	W
		(A=FXXXXXX) (B=F001298) (C=FXXXXXX) (D=FXXXXXX)						(E=F001373) (F=F000701)			
8	1	1A2138-32150	FENDER,EXTENSION	1	1	1	1	1	1	1	W
		(A=FXXXXXX) (B=F001298) (C=FXXXXXX) (D=FXXXXXX)						(E=F001373) (F=F000701)			
9	1	26106-080122	BOLT M 8X 12 PLATED	6	6	6	6	6	6	6	W
		(A=FXXXXXX) (B=F001298) (C=FXXXXXX) (D=FXXXXXX)						(E=F001373) (F=F000701)			
10	1	26367-080002	U-NUT M 8	5	5	5	5	5	5	5	W
		(A=FXXXXXX) (B=F001298) (C=FXXXXXX) (D=FXXXXXX)						(E=F001373) (F=F000701)			



Fig.9. TIRE(ADDITIONAL ITEM)

9. TIRE(ADDITIONAL ITEM)



OCNP2-G57500 9. TIRE(ADDITIONAL ITEM)

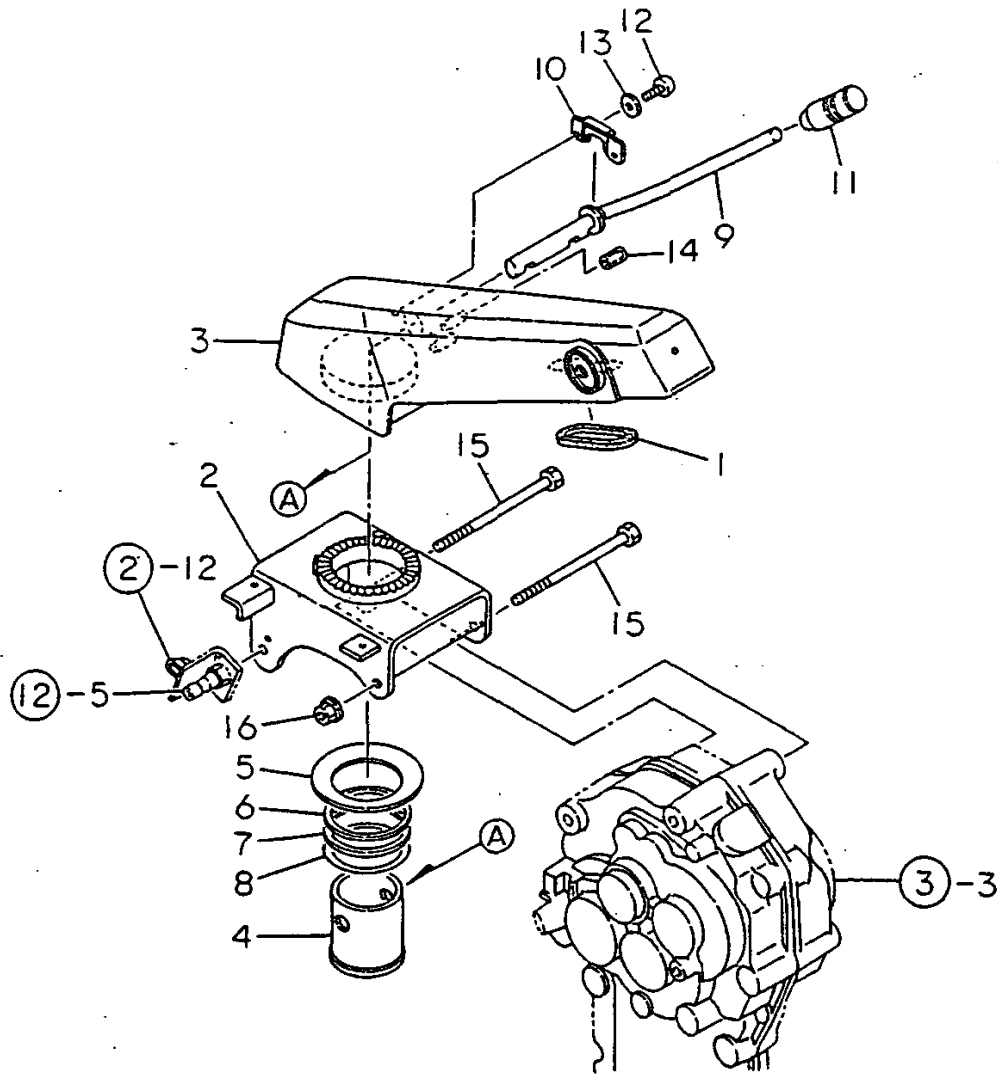
(A)=YK682C  
(B)=YK682G  
(C)=YK782C

(D)=YK782G  
(E)=YK682P,FL  
(F)=YK782P,FL

REF.	LEV.	PARTS NO.	DESCRIPTION	Q'TY						I	R	
				(A)	(B)	(C)	(D)	(E)	(F)			
1	1	1A2019-31010	TIRE 4.00-8L W/FLNG.		1		1					
2	2	1A2040-31030	TIRE L W/WHEEL		1		1					
3	3	1A2040-31050	TIRE 4.00-8 W/O WHL.		1		1					
4	4	1A2040-31070	TIRE 4.00-8		1		1					
5	4	1A2040-31090	VALVE TR412		1		1					
6	3	1A2040-31100	WHEEL 4.00-8		1		1					
7	2	1A2015-31210	FLANGE COMP.,WHEEL		1		1					
8	2	26107-080182	BOLT M 8X 18 PLATED		4		4					
9	2	26367-080002	U-NUT M 8		4		4					
10	1	1A2019-31020	TIRE 4.00-8R W/FLNG.		1		1					
11	2	1A2040-31040	TIRE R W/WHEEL		1		1					
12	3	1A2040-31050	TIRE 4.00-8 W/O WHL.		1		1					
13	4	1A2040-31070	TIRE 4.00-8		1		1					
14	4	1A2040-31090	VALVE TR412		1		1					
15	3	1A2040-31100	WHEEL 4.00-8		1		1					
16	2	1A2015-31210	FLANGE COMP.,WHEEL		1		1					
17	2	26107-080182	BOLT M 8X 18 PLATED		4		4					
18	2	26367-080002	U-NUT M 8		4		4					
19	1	1A2019-31100	PIPE E250,AXLE		2		2					
20	1	1A1540-46020	PIN 8,SNAP		4		4					
21	1	22486-080450	PIN 8X 45		4		4					

Fig.10. HANDLE COLUMN(MOVE-ROUND)

# 10. HANDLE COLUMN(MOVE-ROUND)



(A)=YK682C

(B)=YK682G

(C)=YK782C

(D)=YK782G

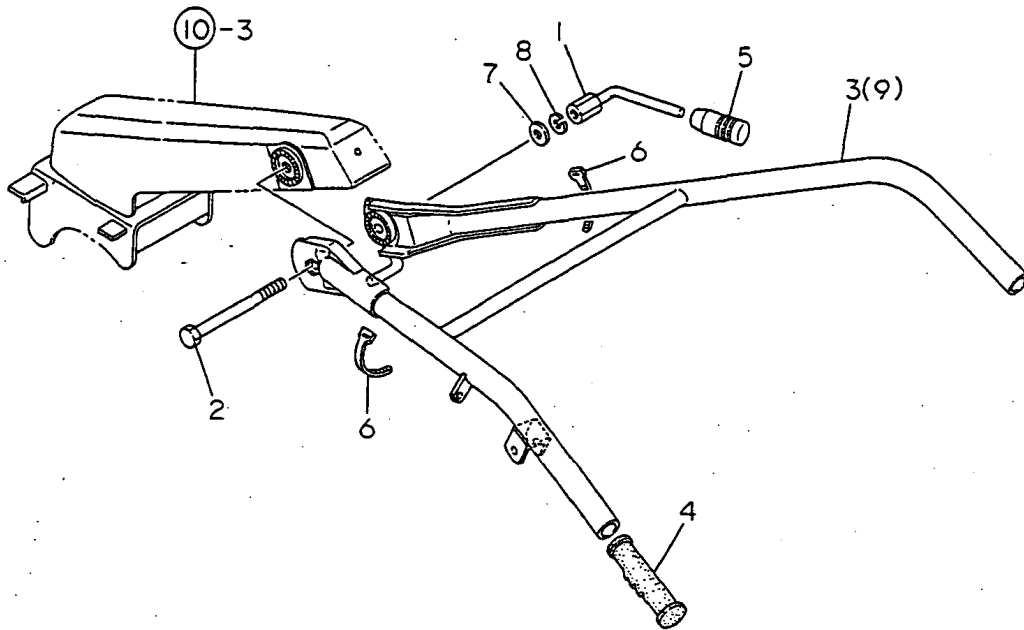
(E)=YK682P,FL

(F)=YK782P,FL

REF.	LEV.	PARTS NO.	DESCRIPTION	QTY						I	R
				(A)	(B)	(C)	(D)	(E)	(F)		
1	1	1A1470-40301	BAND,WIRE PROTECTIVE	1	1	1	1	1	1		
2	1	1A2000-51000	COLUMN COMP.,HANDLE	1	1	1	1	1	1		
3	1	1A2000-51100	FRAME COMP.,HANDLE	1	1	1	1				
3-1	1	1A2000-51101	FRAME COMP.,HANDLE	1	1	1	1	1	1		R
		(A=FXXX)	(B=FXXX)	(C=FXXX)	(D=FXXX)						
4	1	1A2000-51250	BAR,MOVE-RD.CORE	1	1	1	1	1	1		
5	1	1A2000-51280	SPRING,BELLEVILLE	1	1	1	1	1	1		
6	1	1A2000-51310	SHIM 57X65X1	1	1	1	1	1	1		
7	1	1A2000-51320	SHIM 57X65X0.8	1	1	1	1	1	1		
8	1	1A2000-51330	SHIM 57X65X0.6	1	1	1	1	1	1		
9	1	1A2000-51350	LEVER COMP.,MV-RD.	1	1	1	1	1	1		
10	1	1A2000-51450	PLATE,MV-RD.LVR.CHK.	1	1	1	1	1	1		
11	1	1E6570-65750	GRIP,CONT.LEVER BLK.	1	1	1	1	1	1		
12	1	1A1750-90050	SCREW 5X10,TAPPING	2	2	2	2	2	2		
13	1	1A1750-90150	WASHER 5,PLAIN	2	2	2	2	2	2		
14	1	23061-070015	PIPE 7X 15	1	1	1	1	1	1		
15	1	26156-101202	BOLT(10X120)	2	2	2	2	2	2		
16	1	26377-100002	U-NUT M10	1	1	1	1	1	1		

Fig.11. HANDLE

11. HANDLE



(A)=YK682C  
(B)=YK682G  
(C)=YK782C

(D)=YK782G  
(E)=YK682P,FL  
(F)=YK782P,FL

REF.	LEV.	PARTS NO.	DESCRIPTION	Q'TY						I	R
				(A)	(B)	(C)	(D)	(E)	(F)		
1	1	1A2000-51400	LEVER CMP.,HANDLE LC	1	1	1	1	1	1		
2	1	1A2000-51430	BOLT 12X125	1	1	1	1	1	1		
3	1	1A2009-51600	HANDLE COMPL.	1	1	1	1	1	1		
4	1	192040-56220	GRIP,HANDLE	2	2	2	2	2	2		
5	1	1E6570-65750	GRIP,CONT.LEVER BLK.	1	1	1	1	1	1		
6	1	1E6102-84970	BAND 140,WIRE LOCK	2	2	2	2	2	2		
7	1	22137-120000	WASHER 12,POLISHED	1	1	1	1	1	1		
8	1	22217-120000	SPRING WASHER	1	1	1	1	1	1		
9	1	1A2019-51700	HANDLE(582 CMP)							1	1

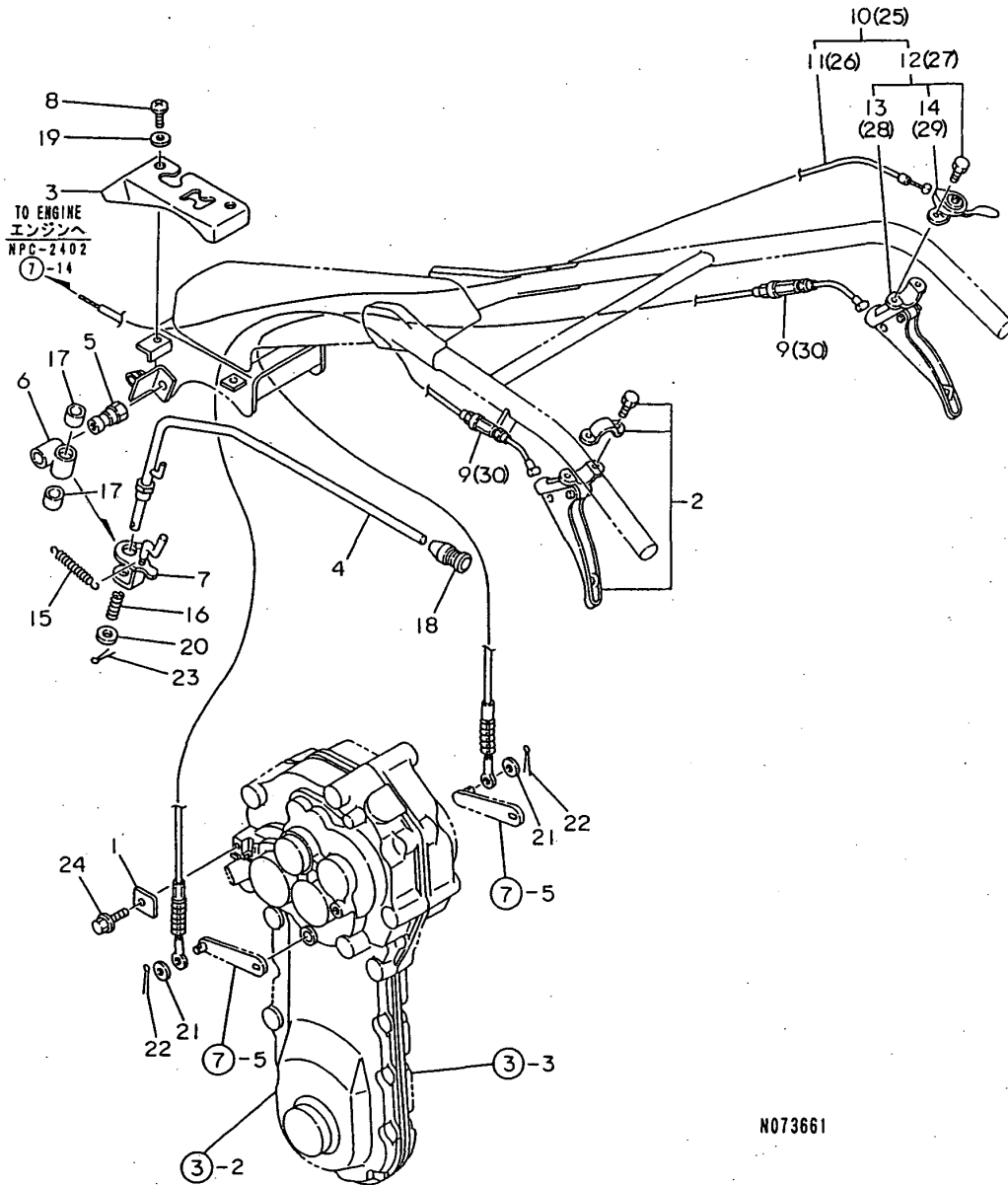
Remarks

(1)EXCLUSIVE FOR YK682FL,782FL.

N:Old  $\xrightarrow{\text{Yes}}$  New, Q:Old  $\xrightarrow{\text{No}}$  New, R:Old  $\xrightarrow{\text{Yes}}$  New, S:Old  $\xrightarrow{\text{No}}$  New, W:Add, Z:Discontinued, F:Interchangeable by set, K:Q'ty Change

Fig.12. CONTROL LEVER 1

12. CONTROL LEVER 1



N073661

Remarks  
(1)EXCLUSIVE FOR YK682FL,782FL.

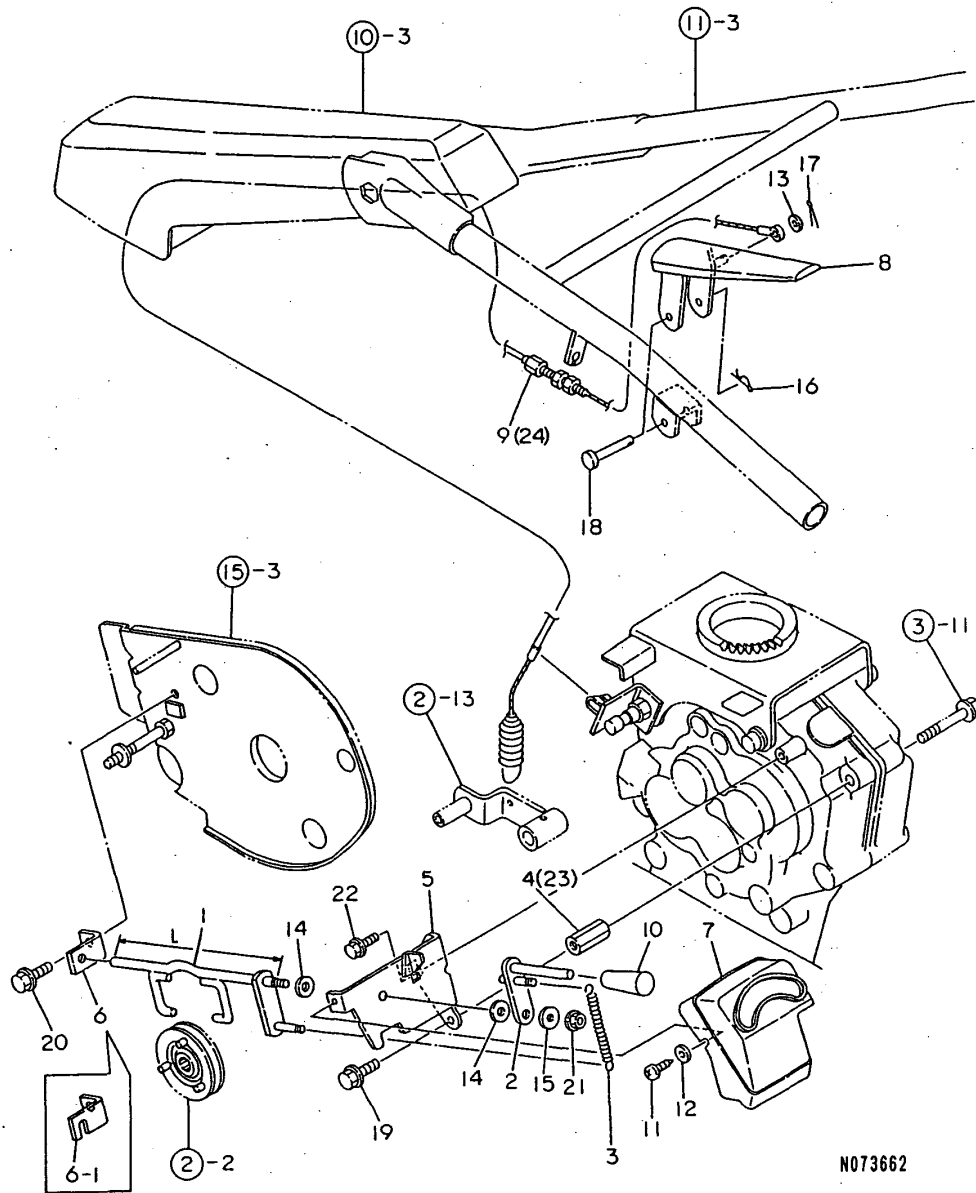
(A)=YK682C  
(B)=YK682G  
(C)=YK782C

(D)=YK782G  
(E)=YK682P,FL  
(F)=YK782P,FL

REF.	LEV.	PARTS NO.	DESCRIPTION	QTY						I	R
				(A)	(B)	(C)	(D)	(E)	(F)		
1	1	1A1470-10350	CLAMP,SD.CLUTCH WIRE	2	2	2	2	2	2		
2	1	7C6220-52840	SD.CLUTCH LEVER L AS	1	1	1	1	1	1		
3	1	1A2000-55061	COVER,CHANGE	1	1	1	1	1	1		
4	1	1A2000-55090	LEVER COMP.,CHANGE	1	1	1	1	1	1		
5	1	1A2000-55150	PIN,CHG.LVR.FULCRUM	1	1	1	1	1	1		
6	1	1A2000-55160	FULCRUM CMP,CHG.LVR.	1	1	1	1	1	1		
7	1	1A2000-55202	PLATE COMP.,CHANGE	1	1	1	1	1	1		
8	1	1A1735-55350	SCREW 6X12,PAN HD.	2	2	2	2	2	2		
9	1	1A2000-55800	WIRE,SIDE CLUTCH	2	2	2	2	2	2		
10	1	1A2009-55800	LEVER R SET,SD.CLTCH	1	1	1	1	1	1		
11	2	1A2000-55620	WIRE,ACCELERATOR	1	1	1	1	1	1		
12	2	1A1479-55780	LEVER R,SIDE CLUTCH	1	1	1	1	1	1		
13	3	7C6220-52910	SD.CLUTCH LEVER R AS	1	1	1	1	1	1		
14	3	1A1479-55790	ACCELERAT.LEVER	1	1	1	1	1	1		
15	1	1A2000-55830	SPRING,CHANGE LEVER	1	1	1	1	1	1		
16	1	1A1104-56030	SPRING,CHANGE LEVER	1	1	1	1	1	1		
17	1	1A1105-57151	METAL,CHANGE LEVER	2	2	2	2	2	2		
18	1	1E6570-65750	GRIP,CONT.LEVER BLK.	1	1	1	1	1	1		
19	1	1A1750-90160	WASHER 6, PLAIN	2	2	2	2	2	2		
20	1	22117-120000	WASHER 12	1	1	1	1	1	1		
21	1	22137-060000	WASHER 6, POLISHED	2	2	2	2	2	2		
22	1	22417-200100	COTTER PIN 2.0X10	2	2	2	2	2	2		
23	1	22417-200180	COTTER PIN 2.0X18	1	1	1	1	1	1		
24	1	26476-060142	BOLT M 6X 14,TAPPING	2	2	2	2	2	2		
25	1	1A2019-55800	LEVER R SET,SD.CLTCH							1	1
26	2	1A2019-55820	WIRE, ACCELERATOR							1	1
27	2	1A1479-55780	LEVER R,SIDE CLUTCH							1	1
28	3	7C6220-52910	SD.CLUTCH LEVER R AS							1	1
29	3	1A1479-55790	ACCELERAT.LEVER							1	1
30	1	1A2019-55850	WIRE,SIDE CLUTCH							2	2

Fig.13. CONTROL LEVER 2

13. CONTROL LEVER 2



Remarks  
 (1)L= REFER.NO.1 204M/M,1-1 236M/M.  
 (2)EXCLUSIVE FOR YK682FL,782FL.

OCNP2-G57500 13. CONTROL LEVER 2

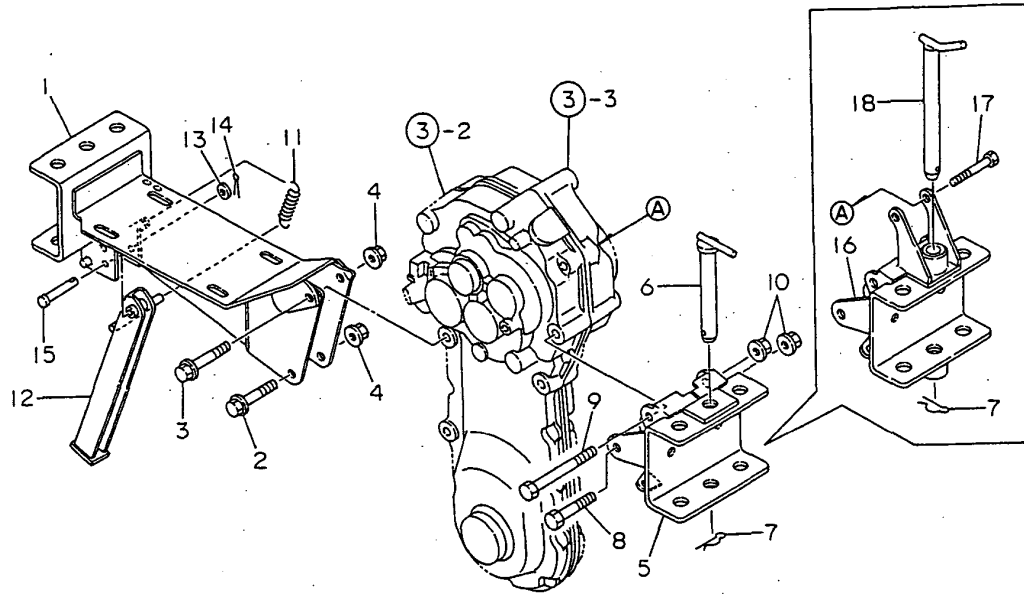
(A)=YK682C  
 (B)=YK682G  
 (C)=YK782C

(D)=YK782G  
 (E)=YK682P,FL  
 (F)=YK782P,FL

REF.	LEV.	PARTS NO.	DESCRIPTION	QTY						I	R
				(A)	(B)	(C)	(D)	(E)	(F)		
1	1	1A2009-55101	GRIP,CONT.LEVER BLK.	1	1	1	1				1
1-1	1	1A2016-55151	SHIFT LEVER ASSY	1	1	1	1	1	1	1	S 1
		(A=F000237) (B=F000237) (C=F000201) (D=F000201)									
2	1	1A2009-55200	ARM COMP.,SWITCHING	1	1	1	1	1	1	1	
3	1	1A2009-55240	SPRING 8X60,TENSION	1	1	1	1	1	1	1	
4	1	1A2009-55250	NUT M8X34,LONG	1	1	1	1	1	1	1	Z
		(B=F000843) (D=F000436)									
5	1	1A2009-55280	FULCRUM A COMPL.	1	1	1	1	1	1	1	
6	1	1A2009-55310	FULCRUM B	1	1	1	1				
6-1	1	1A2016-55380	FULCRUM B	1	1	1	1	1	1	1	S
		(A=F000237) (B=F000237) (C=F000201) (D=F000201)									
7	1	1A2009-55350	COVER,SUB-CHANGE	1	1	1	1	1	1	1	
8	1	1A2009-55400	LEVER COMP.,DEADMAN	1	1	1	1	1	1	1	
9	1	1A2009-55750	WIRE CMP,MAIN CLUTCH	1	1	1	1	1	1	1	
10	1	1E7250-63300	GRIP,RED	1	1	1	1	1	1	1	
11	1	1A1750-90050	SCREW 5X10,TAPPING	1	1	1	1	1	1	1	
12	1	1A1750-90150	WASHER 5,PLAIN	1	1	1	1	1	1	1	
13	1	22137-060000	WASHER 6, POLISHED	1	1	1	1	1	1	1	
14	1	22137-080000	WASHER 8, POLISHED	2	2	2	2	2	2	2	
15	1	22157-060000	WASHER 6	1	1	1	1	1	1	1	
16	1	22360-060000	SNAP PIN 6	1	1	1	1	1	1	1	
17	1	22417-200100	COTTER PIN 2.0X10	1	1	1	1	1	1	1	
18	1	22486-080400	PIN 8X 40	1	1	1	1	1	1	1	
19	1	26107-080162	BOLT M 8X 16 PLATED	1	1	1	1	1	1	1	
20	1	26107-080162	BOLT M 8X 16 PLATED	1	1	1	1	1	1	1	
21	1	26367-060002	NUT M 6	1	1	1	1	1	1	1	
22	1	26476-060142	BOLT M 6X 14,TAPPING	1	1	1	1	1	1	1	
23	1	1A2019-55250	STUD M8X30.8		1		1				W
		(B=F000843) (D=F000436)									
24	1	1A2019-55750	WIRE COMP.,MN.CLUTCH							1	1 2

Fig.14. ENGINE FRAME & HITCH

14. ENGINE FRAME & HITCH



OCNP2-G57500 14. ENGINE FRAME & HITCH

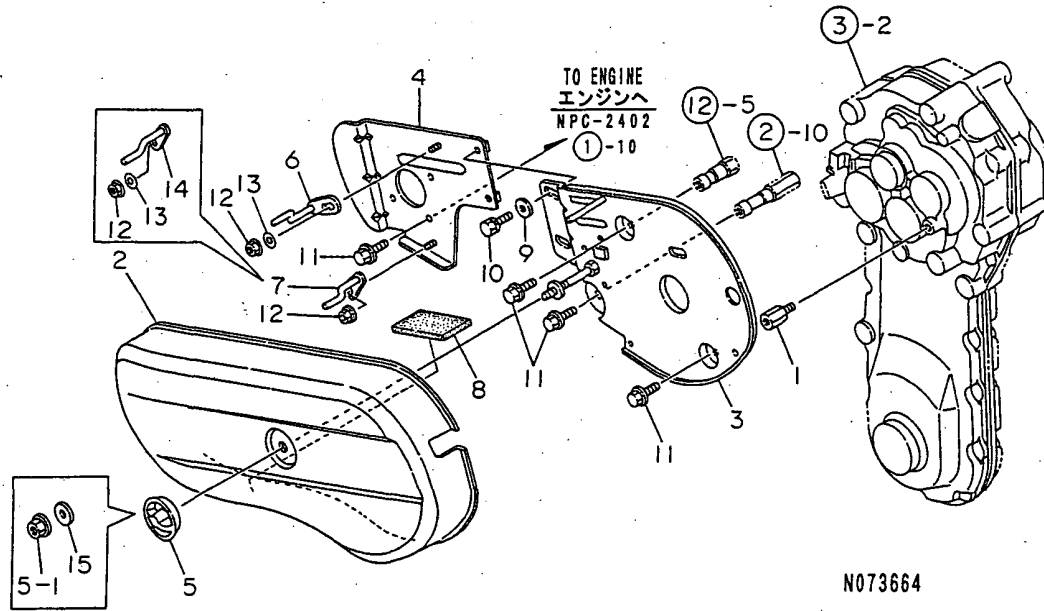
(A)=YK682C  
(B)=YK682G  
(C)=YK782C

(D)=YK782G  
(E)=YK682P,FL  
(F)=YK782P,FL

REF.	LEV.	PARTS NO.	DESCRIPTION	QTY						I	R
				(A)	(B)	(C)	(D)	(E)	(F)		
1	1	1A2009-61000	FRAME COMP.,ENGINE	1	1	1	1	1	1		
2	1	26137-100502	BOLT M10X50,COLLAR	1	1	1	1	1	1		
3	1	26137-100602	BOLT M10X 60 PLATED	1	1	1	1	1	1		
4	1	26377-100002	U-NUT M10	2	2	2	2	2	2		
5	1	1A2009-61200 (B=F000843)	HITCH 95-C COMPL. (D=F000436)	1	1	1	1	1	1		Z
6	1	1A1040-81100 (B=F000843)	PIN, HITCH (D=F000436)	1	1	1	1	1	1		Z
6-1	1	1S0203-46000	PIN, HITCH	1		1		1	1		N
7	1	22360-160000 (A=FXXXXXX)	SNAP PIN 16 (C=FXXXXXX)	1	1	1	1	1	1		
8	1	26156-100552	BOLT M10X 55 PLATED	1	1	1	1	1	1		
9	1	26156-100952	BOLT 10X95	1	1	1	1	1	1		
10	1	26367-100002	U-NUT M10	2	2	2	2	2	2		
11	1	1A1105-16001	SPRING,MN.CLTCH LVR.	1	1	1	1	1	1		
12	1	1A2000-61300	STAND COMPL.	1	1	1	1	1	1		
13	1	22137-080000	WASHER 8, POLISHED	1	1	1	1	1	1		
14	1	22417-200180	COTTER PIN 2.0X18	1	1	1	1	1	1		
15	1	22486-080400	PIN 8X 40	1	1	1	1	1	1		
16	1	1A2019-61200 (B=F000843)	HITCH 95-G COMPL. (D=F000436)		1		1				W
17	1	26116-080552 (B=F000843)	BOLT 8X55 (D=F000436)		1		1				W
18	1	1A2019-61350 (B=F000843)	PIN 160 COMP.,HITCH (D=F000436)		1		1				W

Fig.15. BELT COVER

15. BELT COVER



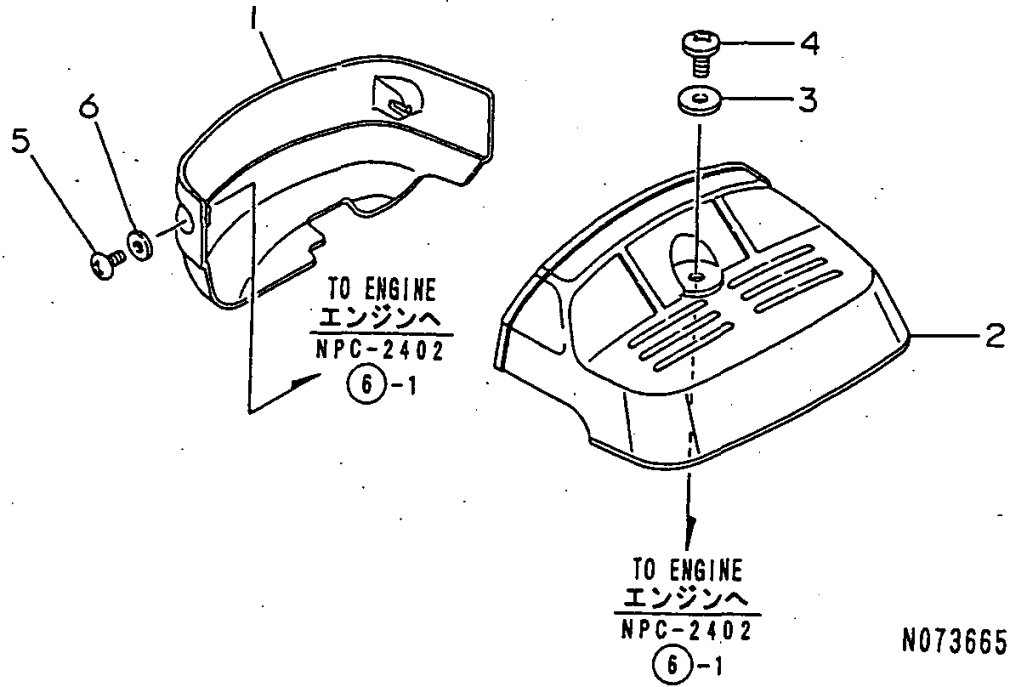
(A)=YK682C  
(B)=YK682G  
(C)=YK782C

(D)=YK782G  
(E)=YK682P,FL  
(F)=YK782P,FL

REF.	LEV.	PARTS NO.	DESCRIPTION	QTY						I	R
				(A)	(B)	(C)	(D)	(E)	(F)		
1	1	1A1490-10340	STUD 22.5,BACK COVER	1	1	1	1	1	1		
2	1	1A2009-62060	COVER EW,BELT	1	1	1	1				
2-1	1	1A2009-62061	COVER EW,BELT	1	1	1	1	1	1		R
3	1	1A2009-62100	COVER EW COMP.,REAR	1	1	1	1	1	1		
4	1	1A2000-62200	GUARD COMP.,PULLEY	1	1	1	1				
4-1	1	1A2000-62201	GUARD COMPL.,PULLEY	1	1	1	1	1	1		N
5	1	1A2000-62300	KNOB,BELT COVER	1	1	1	1	1	1		
5-1	1	26367-080002	U-NUT M 8	1	1	1	1	1	1		S
6	1	1A2009-62400	RETAINER EW CMP,BELT	1	1	1	1				
6-1	1	1A2009-62401	RETAINER EW CMP,BELT	1	1	1	1	1	1		R
7	1	1A2009-62420	RETAINER B CMP.,BELT	1	1	1	1				
7-1	1	1A2009-62421	RETAINER B CMP.,BELT	1	1	1	1				R
7-2	1	1A2009-62421	RETAINER B CMP.,BELT	1	1	1	1				Z
8	1	1A2009-62480	SEAT 100X60X5	1	1	1	1	1	1		
9	1	22137-080000	WASHER 8, POLISHED	2	2	2	2	2	2		
10	1	26013-080144	BOLT 8X14	2	2	2	2	2	2		
11	1	26107-080122	BOLT M 8X 12 PLATED	6	6	6	6	6	6		
12	1	26367-060002	NUT M 6	2	2	2	2	2	2		
13	1	22137-060000	WASHER 6, POLISHED	2	2	2	2	2	2		W
14	1	1A2001-62400	RETAINER CMP,BELT LW	1	1	1	1				W
14-1	1	1A2001-62401	RETAINER CMP,BELT LW	1	1	1	1	1	1		N
15	1	22157-080000	WASHER 8	1	1	1	1	1	1		W

Fig.16. BONNET

# 16. BONNET



(A)=YK682C  
(B)=YK682G  
(C)=YK782C

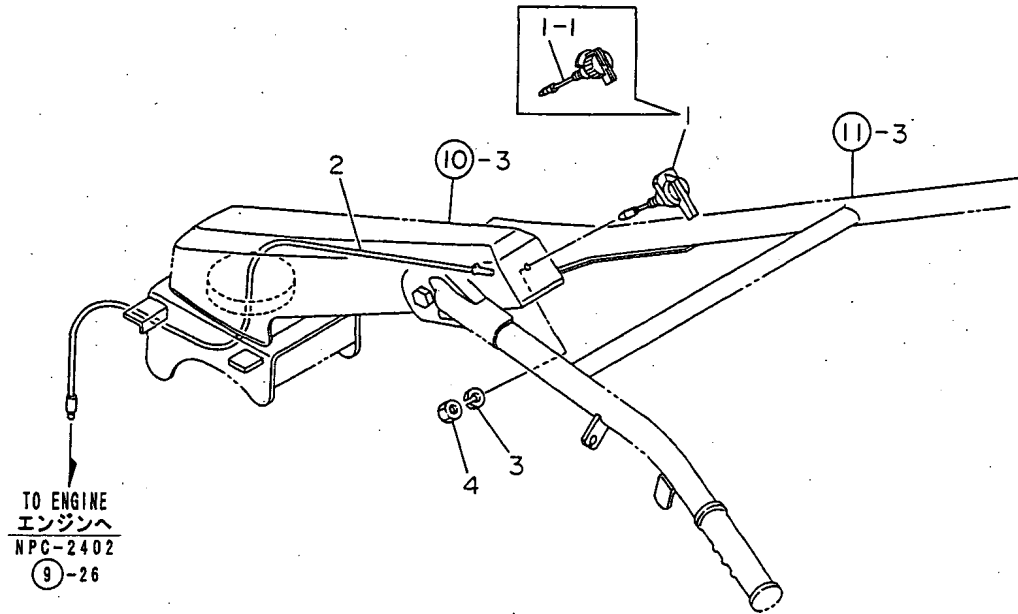
(D)=YK782G  
(E)=YK682P,FL  
(F)=YK782P,FL

REF.	LEV.	PARTS NO.	DESCRIPTION	Q'TY						I	R
				(A)	(B)	(C)	(D)	(E)	(F)		
1	1	1A2000-64100	MASK, FRONT	1	1	1	1	1	1		
2	1	1A2019-64200	COVER 55,REAR	1	1	1	1	1	1		
3	1	1A2000-64210	WASHER 6X19X1.0	1	1	1	1	1	1		
4	1	1A2000-64220	SCREW 6X16	1	1	1	1	1	1		
5	1	1A1750-90050	SCREW 5X10,TAPPING	2	2	2	2	2	2		
6	1	1A1750-90150	WASHER 5,PLAIN	2	2	2	2	2	2		



Fig.17. ELECTRICAL PARTS

17. ELECTRICAL PARTS



OCNP2-G57500 17. ELECTRICAL PARTS

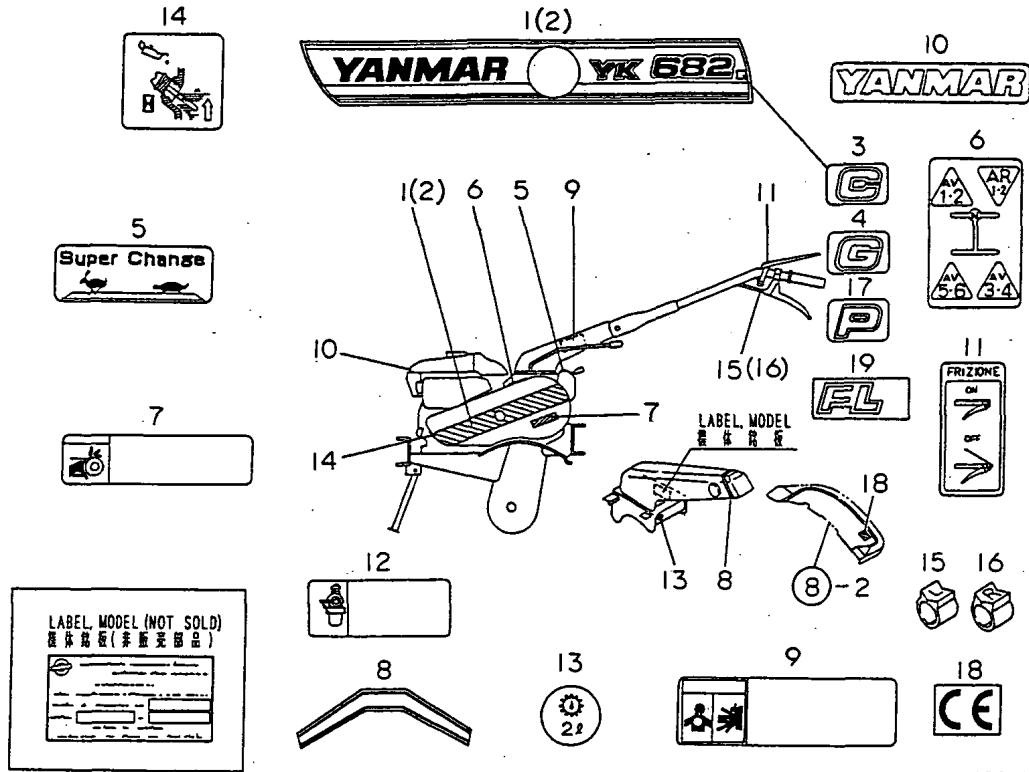
(A)=YK682C  
(B)=YK682G  
(C)=YK782C

(D)=YK782G  
(E)=YK682P,FL  
(F)=YK782P,FL

REF.	LEV.	PARTS NO.	DESCRIPTION	Q'TY						I	R
				(A)	(B)	(C)	(D)	(E)	(F)		
1	1	1A1470-40900	SWITCH,STOP	1	1	1	1				
1-1	1	1A1750-40800	SWITCH,STOP	1	1	1	1	1	1	1	S
		(A=F000237) (B=F000237) (C=F000201) (D=F000201)									
2	1	1A2000-83100	CORD,STOP SWITCH	1	1	1	1	1	1	1	
3	1	22217-080000	SPRING WASHER 8	1	1	1	1	1	1	1	
4	1	26757-080002	LOCK NUT M 8 PLATED	1	1	1	1	1	1	1	

Fig.18. LABELS

18. LABELS



N073667

OCNP2-G57500 18. LABELS

(A)=YK682C  
(B)=YK682G  
(C)=YK782C

(D)=YK782G  
(E)=YK682P,FL  
(F)=YK782P,FL

REF.	LEV.	PARTS NO.	DESCRIPTION	QTY						I	R
				(A)	(B)	(C)	(D)	(E)	(F)		
1	1	1A2019-86110	LABEL 682,BELT COVER	1	1				1		
2	1	1A2019-86120	LABEL 782,BELT COVER				1	1		1	
3	1	1A2019-86150	MARK "C"	1		1					
4	1	1A2019-86170	MARK 'G'		1		1				
5	1	1A2009-86200	LABEL,SUB-CHANGE	1	1	1	1	1	1	1	
6	1	1A2009-86250	LABEL,CHANGE	1	1	1	1	1	1	1	
7	1	1A2099-86300	LABEL,CVR.SAFETY	1	1	1	1	1	1	1	
8	1	1A2000-86310	LABEL,HANDLE FRAME	1	1	1	1	1	1	1	
9	1	1A2099-86320	LABEL,CAUTION	1	1	1	1	1	1	1	
10	1	1A2130-86320	LABEL,FUEL TANK	1	1	1	1	1	1	1	
11	1	1A2009-86340	LABEL,MAIN CLUTCH	1	1	1	1	1	1	1	
12	1	1A2099-86360	LABEL,FUEL COCK	1	1	1	1	1	1	1	
13	1	1A2009-86701	LABEL,OIL 2	1	1	1	1	1	1	1	
14	1	1A2099-86820	LABEL,ENG.OIL,ITA	1	1	1	1	1	1	1	
15	1	1A1103-88800	BAND L,MARK	1	1	1	1	1	1	1	
16	1	1A1103-88810	BAND R,MARK	1	1	1	1	1	1	1	
17	1	1A2138-86150	MARK "P"							1	1
18	1	1A6150-92550	MARK "CE"	1	1	1	1	1	1	1	W
				(A=FXXXXXX)	(B=F001148)	(C=FXXXXXX)	(D=FXXXXXX)	(E=F001018)	(F=F000456)		
18-1	1	1E1061-86610	MARK "CE"	1	1	1	1	1	1	1	N
				(A=FXXXXXX)	(B=F001148)	(C=FXXXXXX)	(D=FXXXXXX)	(E=F001373)	(F=F000701)		
18-2	1	1E1061-86610	MARK "CE"	1	1	1	1	1	1	1	Z
				(A=FXXXXXX)	(B=F001482)	(C=FXXXXXX)	(D=FXXXXXX)	(E=F001632)	(F=F000831)		
19	1	1A1479-86210	MARK (FL)							1	1

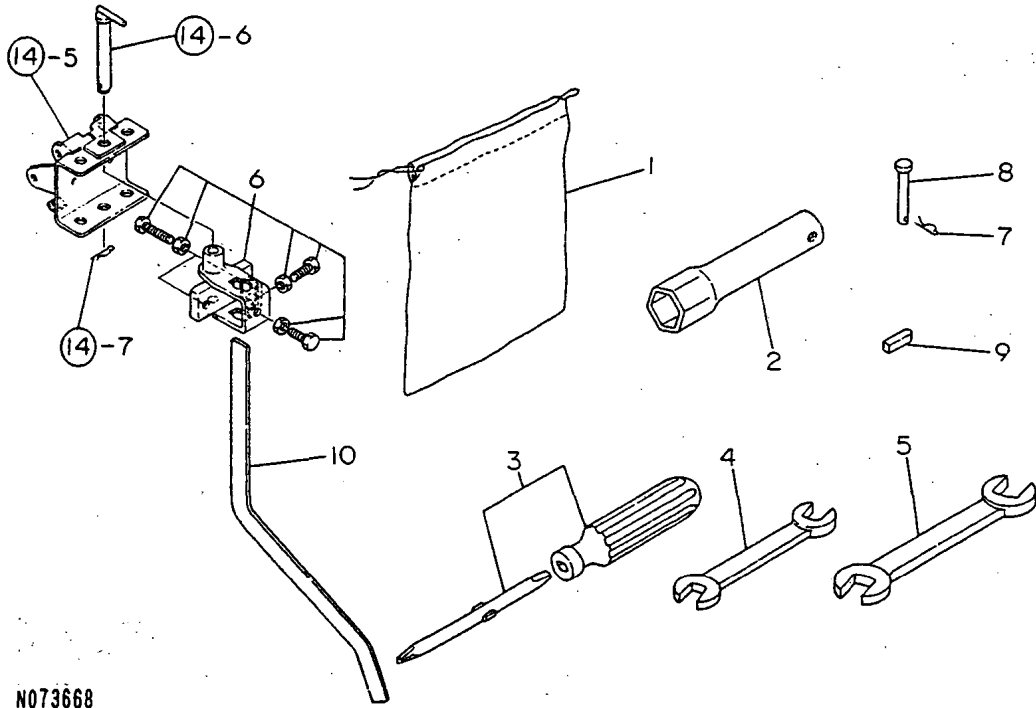
Remarks

(1)EXCLUSIVE FOR YK682FL,782FL.

N:Old  $\begin{matrix} \text{Yes} \\ \text{No} \end{matrix}$  New, Q:Old  $\begin{matrix} \text{No} \\ \text{Yes} \end{matrix}$  New, R:Old  $\begin{matrix} \text{Yes} \\ \text{No} \end{matrix}$  New, S:Old  $\begin{matrix} \text{No} \\ \text{Yes} \end{matrix}$  New, W:Add, Z:Discontinued, F:Interchangeable by set, K:Q'ty Change

Fig.19. LABELS & ACCESSORIES(ADD.ITEM)

19. LABELS & ACCESSORIES(ADD.ITEM)



N073668

(A)=YK682C  
(B)=YK682G  
(C)=YK782C

(D)=YK782G  
(E)=YK682P,FL  
(F)=YK782P,FL

REF.	LEV.	PARTS NO.	DESCRIPTION	Q'TY						I	R
				(A)	(B)	(C)	(D)	(E)	(F)		
1	1	1A1750-83900	TOOL BAG	1	1	1	1	1	1		
2	1	160110-92700	BOX, SPANNER	1	1	1	1	1	1		
3	1	160330-92730	SCREWDRIVER (+)	1	1	1	1				
3-1	1	1D2040-87060	SCREWDRIVER,COMBINAT	1	1	1	1	1	1		R
		(A=FXXX) (B=FXXX) (C=FXXX) (D=FXXX)									
4	1	28110-100120	WRENCH 10X12	1	1	1	1	1	1		
5	1	28110-120140	WRENCH 12X14	1	1	1	1	1	1		
6	1	7S0070-15000	UNIVIR SAL HITCH	1	1	1	1				
7	1	22372-060000	SNAP PIN 6	2	2	2	2	2	2		
8	1	22487-060400	PIN 6X 40	2	2	2	2	2	2		
9	1	22550-050201	KEY 5X20	1	1	1	1	1	1		
10	1	1S0090-60000	BAR,RESISTANCE			1		1			